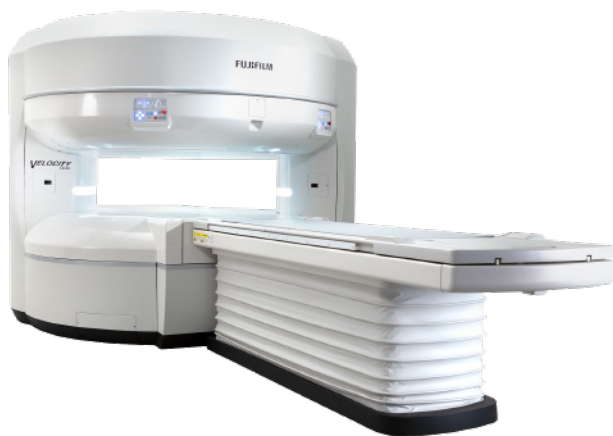




# OASIS **VELOCITY**

*High performance true open MRI*

The patient satisfaction advantages of true high field Open MRI combined with cutting edge reconstruction software and workflow-engineered RF coils. Sensitive RF coils and powerful imaging system architecture deliver high image quality and high-field throughput.



Differentiate your practice, increase your volume, enhance your imaging excellence with Velocity.

## Product Highlights

- IP-RAPID: Accelerated 2D scans for all body parts, accelerated 3D TOF MRA boosts SNR for excellent image quality
- Integrated RF coil technology
- 16 channel RF system
- 33 mT/m, 100 T/m/s gradients
- Blanket coil technology provides maximum convenience, flexibility, comfort and performance
- 82 cm wide table with 20 cm lateral movement and 660 lb capacity accommodates patients of all sizes

### FUJIFILM Healthcare Americas Corporation

81 Hartwell Avenue, Suite 300, Lexington, MA 02421

[fujifilmhealthcare.com](http://fujifilmhealthcare.com)

800.431.1850

© FUJIFILM Healthcare Americas Corporation

DOC-0057429-A

**FUJIFILM**  
Value from Innovation