

## EconoMAX Series C-Arm Tables



Maximum c-arm access

500 lb weight capacity

2" patient comfort pad

Lightweight and easy to move

24" wide top

Made in the USA

### Standard Accessories:

Hand Control



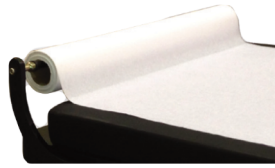
Patient Straps



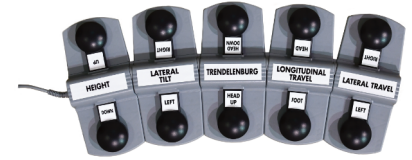
# Optional Accessories



Standard Side Rails



Paper Roll



Foot Control

\*EconoMAX 1, 2, & 3 require upgrade to use both hand and foot controls simultaneously



Modular Side Rails

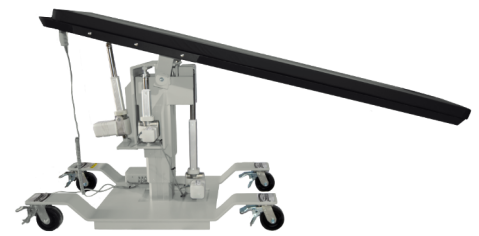
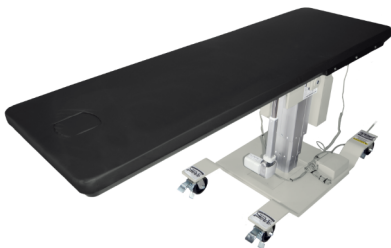


Surgical Arm Boards

\*Require side rails



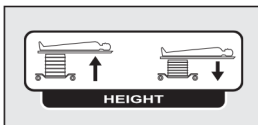
Procedural Arm Boards



# Configurations/Specifications

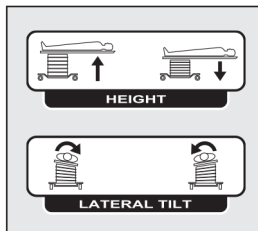
## EconoMAX 1

Height 28"-38"



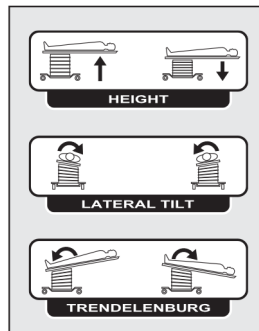
## EconoMAX 2

Height 28"-38"



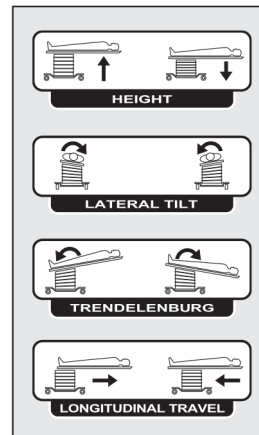
## EconoMAX 3

Height 28"-38"



## EconoMAX 4

Height 30"-40"



## EconoMAX 5

Height 33.5"-43.5"

