

BT Series C-Arm Tables



Maximum c-arm access

1,000 lb weight capacity

2" patient comfort pad

Lightweight and easy to move

27" wide top

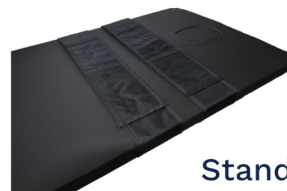
Made in the USA

Standard Accessories:

Hand Control



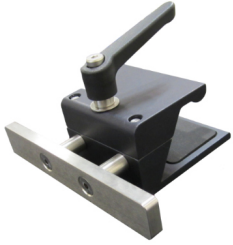
Patient Straps



Standard Side Rails



Optional Accessories



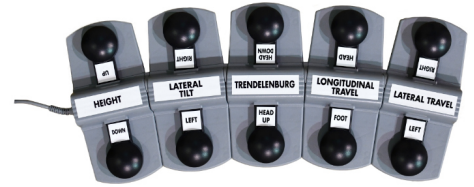
Modular Side Rails



Paper Roll



Surgical Arm Boards
*Require side rails

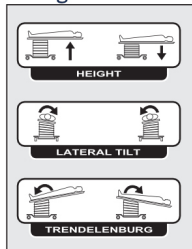


Foot Control

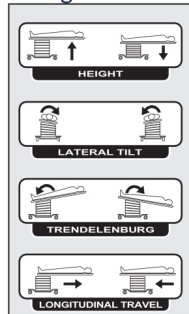


Configurations/Specifications

BT 3
Height 29"-37"



BT 4
Height 31"-39"



BT 5
Height 35"-43"

