

## UroMAX Series C-Arm Tables



### Standard Accessories:

Hand Control



Foot Control



Patient Straps



Standard Side rails



Easy c-arm access

500 lb weight capacity

2" patient comfort pad

Light weight and easy to move

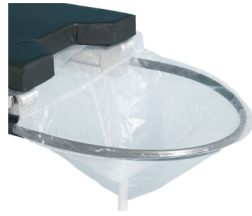
24" wide top

Made in the USA

# Optional Accessories



Drain Loop



Fluid Catchers



Premium Stirrups



Paper Roll



Full Body Extension



Foot Board



Procedural Arm Boards



Surgical Arm boards  
(\*side rails required)

**Most OR accessories can be attached to our side rails**

# Siderail Options

**Split - Standard Style**



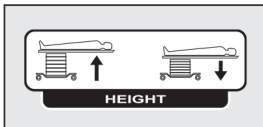
**Straight - Optional Style**



# Configurations/Specifications

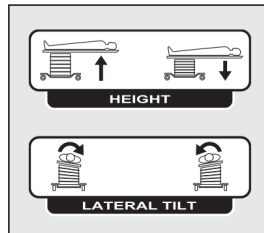
## UroMAX-1

Height 28"-38"



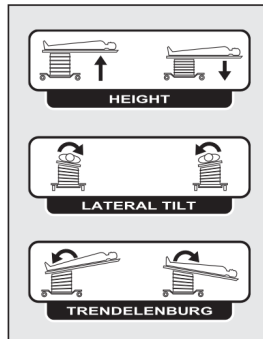
## UroMAX 3

Height 28"-38"



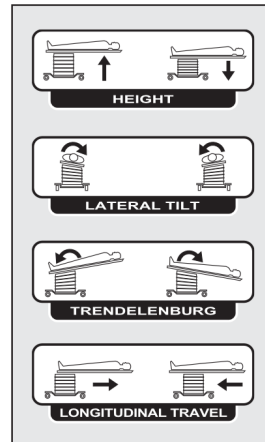
## UroMAX 3

Height 28"-38"



## UroMAX-4

Height 30"-40"



## UroMAX-5

Height 33.5"-43.5"

